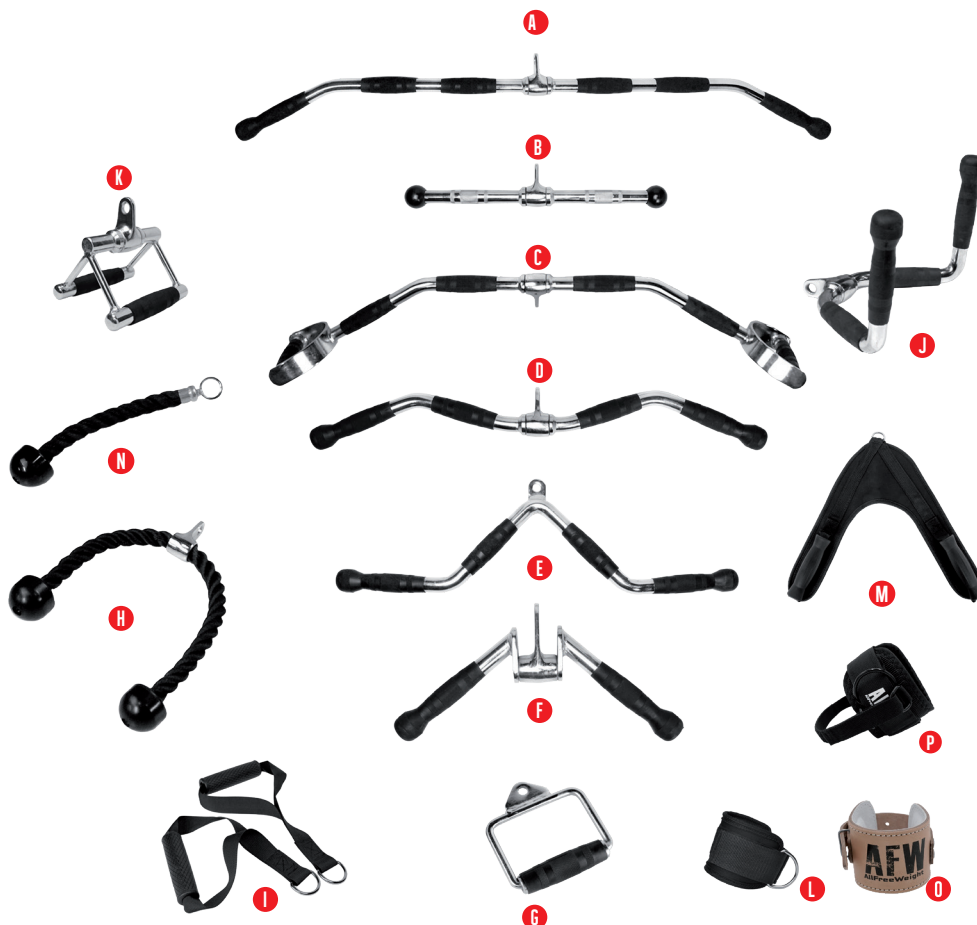


# 105450/463 - 552102-06

## AGARRES DE POLEA PULLEY GRIP



### AGARRES DE POLEA

Ref.: 105450

**A** Ag. Polea alta  
Lat pulldown bar

Ref.: 105459

**B** Ag. Triceps recto  
Straight triceps handle

Ref.: 105451

**C** Ag. Paralelo dorsal  
Parallel grip  
Distancia entre agarre: 92 cm  
Distance between grip: 92 cm

Ref.: 105452

**D** Ag. Especial Biceps/Triceps  
Special biceps/triceps handle

Ref.: 105458

**E** Ag. Biceps/Triceps  
Biceps/Triceps Handle

Ref.: 105454

**F** Ag. Triceps curvo rec. goma  
Rubber-coating grip

Ref.: 105456

**G** Ag. Estribo  
Stirrup Grip

Ref.: 105455

**H** Ag. Cuerda  
Triceps rope handle

Ref.: 105463

**I** Ag. Estribo Nylon  
Nylon stirrup grip

Ref.: 105461

**J** Ag. Remo ancho  
Close grip low row

Ref.: 105457

**K** A. Remo en V  
V Handle  
Distancia entre agarre: 14 cm  
Distance between grip: 14 cm

Ref.: 105462

**L** Ag. Tobillero con velcro (und.)  
Ankle strap

Ref.: 13100

**M** Ag. Polea abdominal  
Abdominal pulley grip

Ref.: 105460

**N** Ag. Cuerda a una mano  
One hand rope grip

Ref.: 552102

**O** Ag. Polea tobillo en cuero  
Ankle Grip in Natural Leather

Ref.: 552106

**P** Ag. Polea polea tobillo-glúteo  
Ankle/Gluteus Pulley Grip (Pair)